

Quick Start Guide



Wired Interface



Wireless BaseStation



Wireless BeltPack



Remote Transceiver



Wired BeltPack



Remote Antenna

1 Set Up Main Unit

- Unpack Main Unit, antennas, wired beltacks, accessories
- Position Main Unit out of the way to avoid foot traffic
- Plug main unit in but DO NOT Turn ON power to BaseStation(s)

2 Mount Antenna System(s)

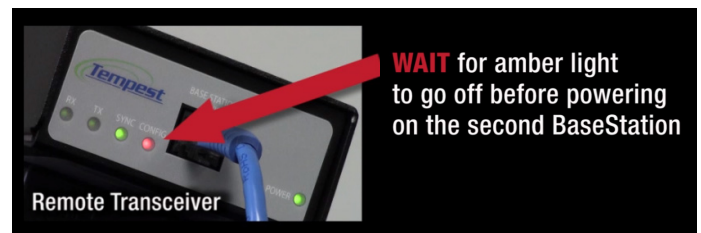
- Mount Remote Antenna using provided mounting options. IMPORTANT: Ensure line-of-sight is achieved from the antenna to the field!
- Mount Remote Transceiver with or near Remote Antenna
- Connect Remote Antenna to Remote Transceiver using black coaxial antenna cable
- Connect Remote Transceiver to BaseStation using (blue Cat-5) transceiver cable (one Remote Transceiver/Antenna per BaseStation)



Important When Mounting Antenna:

- Point antenna toward your sideline with “fins” oriented top to bottom (see photo)
- Open any windows or place antenna outside of press box whenever possible
- If you have two antennas (for two Base Station systems) mount antennas as far apart as possible

- While observing bottom LEDs of Remote Transceiver, turn ON BaseStation and confirm Config LED (amber light) turns on and off. Note: If you have a two BaseStation system, turn on and configure one BaseStation at a time
- Repeat step 2 for additional Antenna System (if applicable)



Visit our website to view Set-up and mounting antenna instructional videos.

<http://www.coachcomm.com/communication/headsets/tempest-fx>

Game Day Set-Up

3 Connect Cables, Wired BeltPacks and Headsets



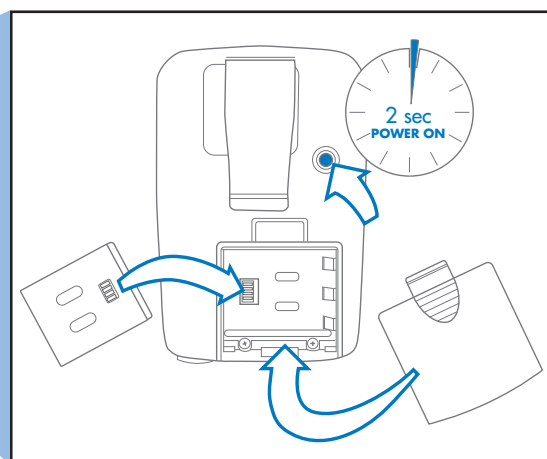
- Connect Wired BeltPack (Cat-5) cabling to desired channels on front of Wired Interface (A/B or C/D)
- Connect opposite end of Wired BeltPack cabling to each Wired BeltPack
- Plug a headset into each Wired BeltPack
- Turn ON Wired BeltPacks and confirm power

4 Test Wired BeltPack Communication (requires 2 people)

- Put on headset and press Talk (T) button on the Wired BeltPack and confirm you can communicate with a second Wired BeltPack on both channels with no crosstalk
- Repeat test for each Wired BeltPack and Headset combination

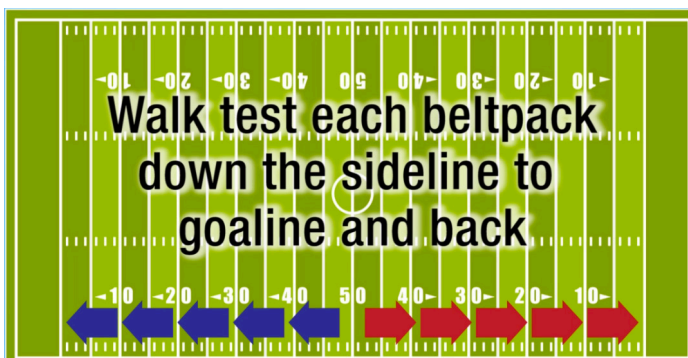
5 Set Up Wireless Beltpacks (on sideline)

- Unpack headsets and Wireless BeltPacks and lay them out across bench or table
- If needed, replace batteries with fully charged batteries
- Connect headset to each Wireless BeltPack
- Power ON the BeltPacks (see figure) and confirm that each unit logs into its respective BaseStation



6 Walk Test Wireless BeltPacks (requires 2 people)

- Put on headset and Wireless BeltPack combination
- Press Talk button for the active channel on the top of the Wireless BeltPack. Confirm you can communicate with a second Wireless BeltPack on the same channel (A, B, C or D). **Note:** available channels will be based on your system's configuration. If your system only operates on A/B, then C/D will likely be disabled



- IMPORTANT! Each tester should walk their Wireless BeltPack to opposite goal lines and back ensuring clear communication with the other tester. Always place Wireless BeltPack on hip opposite from the press box when walk testing
- Repeat walk test for each Wireless BeltPack

For more information on setting up the Tempest FX system refer to the Tempest FX User Manual or contact our Technical Support at [1.800.749.2761](tel:1.800.749.2761).

